

# OUTDOOR ELMORE

Blueways, Greenways and Outdoor Recreation Plan

## ELMORE COUNTY OUTDOOR RECREATION PLAN

ELMORE COUNTY, ALABAMA  
SEPTEMBER 2014



GOODWYN | MILLS | CAWOOD

THE UNIVERSITY OF  
ALABAMA

## **ACKNOWLEDGEMENTS**

### **Elmore County Commission**

Mark Hragyil, District 1  
James (Trey) Taylor, District 2  
David Bowen, Chairman, District 3  
Joe Faulk, District 4  
Stephanie Daniels Smoke, Vice-Chairman, District 5

### **Elmore County Staff**

Richie Beyer, County Engineer  
Charles King, Assistant County Engineer

### **Central Alabama Regional Planning and Development Commission**

Greg Clark, Executive Director  
Sara Byard, Project Manager  
Alan Axford, GIS Coordinator

### **Working Group**

Terrel Brown, Council Member, City of Tallassee  
Clayton Edgar, Mayor, Town of Deatsville  
Wanda Estes, Council Member, Town of Eclectic  
Percy Gill, Council Member, City of Wetumpka  
Bill Gillespie, Mayor, City of Prattville  
Margaret White, Mayor, Town of Elmore  
Connie Hand, Mayor, Town of Coosada  
Joyce Lloyd, Council Member, City of Millbrook  
Stephanie Daniels Smoke, Commissioner, Elmore County  
Trey Taylor, Commissioner, Elmore County  
Larry Teel, Board Member, Elmore Co. Board of Education

# TABLE OF CONTENTS

<b>EXECUTIVE SUMMARY .....</b>	<b>4</b>
<b>INTRODUCTION AND BACKGROUND.....</b>	<b>5</b>
<b>ASSESSMENT .....</b>	<b>6</b>
<b>RECOMMENDATIONS FOR RECREATION DEVELOPMENT</b>	
Vision and Goals.....	9
Recreation Opportunities.....	10
Tourism Opportunities .....	19
<b>STRATEGIES FOR IMPLEMENTATION .....</b>	<b>33</b>
<b>APPENDIX</b>	
List of Recreation Facilities.....	36
Public Comments .....	37
Recreation Opportunities Studies .....	39

# EXECUTIVE SUMMARY

## Vision

Create a framework for outdoor recreation in Elmore County that includes public access and services for county residents and provides economic, community development and tourism opportunities.

## Goals

- Provide access to outdoor recreation opportunities county wide
- Capture synergy through connected recreation facilities
- Support economic and community development
- Strengthen tourism infrastructure

## Recommendations

- Establish a County Recreation Advisory Group: Establish an ‘advisory group’ made up of representatives from the eight municipalities and the five county commission districts. This group would be tasked with assisting the county commission with evaluating and prioritizing recreation facility development.
- Identify Potential Projects
  - Crenshaw Park
  - Corn Creek Coosa River Park
  - SwayBack Bridge Park
  - Yates Lake West Wildlife Preserve
  - Jackson Lake
  - Fire Tower Property
  - Trails
  - Holtville Park
- Cultivate Tourism Opportunities
  - Eco-tourism Niche Market:  
Recognizing the importance of existing natural and cultural resources, Elmore County should consider adopting ecotourism and nature based tourism as part of an overall economic development strategy.
  - Way-finding System

# INTRODUCTION AND BACKGROUND

## PLANNING PROCESS



Figure 1 - Elmore County residents give their input during one of the four public meetings held in March 2014.

The planning process for the Outdoor Elmore Recreation Plan was initiated in the winter of 2014, supported by the Central Alabama Regional Planning and Development commission (CARPDC) and led by the Elmore County Commission. These two parties understood the need for the community to develop a vision for recreation related development in the county. In 2013, Elmore County received an Appalachian Regional Commission planning grant to develop an outdoor recreation plan.

Following the selection of Goodwyn, Mills and Cawood to assist with facilitation and plan development, the first step in the planning process consisted of convening a working group to respond to the consultant's recommendations. This committee was composed of representatives of the eight municipalities in Elmore County, two county commissioners and a representative of the school board. In conjunction with the working group discussions, the planning team engaged in collecting and reviewing information on the County, which includes but is not limited to, previous plans, studies, field surveys, and interviews.



Figure 2 - Helping shape the future of Outdoor Recreation in Elmore County.

To engage the public during the planning process, GMC conducted listening sessions in locations across the county with the County, business owners, property owners, and other stakeholders focused on opportunities for recreation development. The listening sessions were held in Holtville, Millbrook/Coosada, Wetumpka and Tallassee. The written comments from all community meetings are located in the Appendix.

Using the assessment for base information and input from the community workshops, plan recommendations were drafted and presented to the working group for review. Following the review, and subsequent revisions, the planning team held a second series of community meetings for citizens to review the recommendations.

## ASSESSMENT

According to the Outdoor Industry Association, Alabamians spend \$7.5 billion on outdoor recreation annually. This economic activity translates into 86,000 direct jobs, \$2 billion in wages and salaries and \$494 million in state and local tax revenue. During the assessment phase, the design team sought to understand what activities are available, where they are located, and who participates in recreation activities in Elmore County.

The Alabama Statewide Comprehensive Outdoor Recreation Plan (SCORP) for 2013-2018 includes Elmore County in Region 9 with Montgomery and Autauga counties. The top five recreation activities in Region 9 are walking for pleasure (65.2%), pool swimming (56.1%), freshwater beaches (45.9%), football (38.1%), and saltwater beaches (37.6%). When compared to other regions, the frequency of participation in recreational activities in Region 9 is lower.

### Urban-rural Pattern

Analysis of land development patterns in Elmore County reveals the following observations:

- The county is most densely developed between I-65 and US 231. This area includes Millbrook, Coosada, Elmore and portions of Prattville. Approximately 48% of the population resides in this sector.
- Tallassee is the urban center on the east side of the county. It is linked via AL 229 to the Lake Martin area.
- Lake Martin in the northeast corner of the county is an exclusive residential home community surrounding the west and southern portions of the 44,000 acre lake.
- The northern and eastern sections of the county are less densely developed.
- US 231 bisects the county, running in a north-south direction through Wetumpka, the county seat.

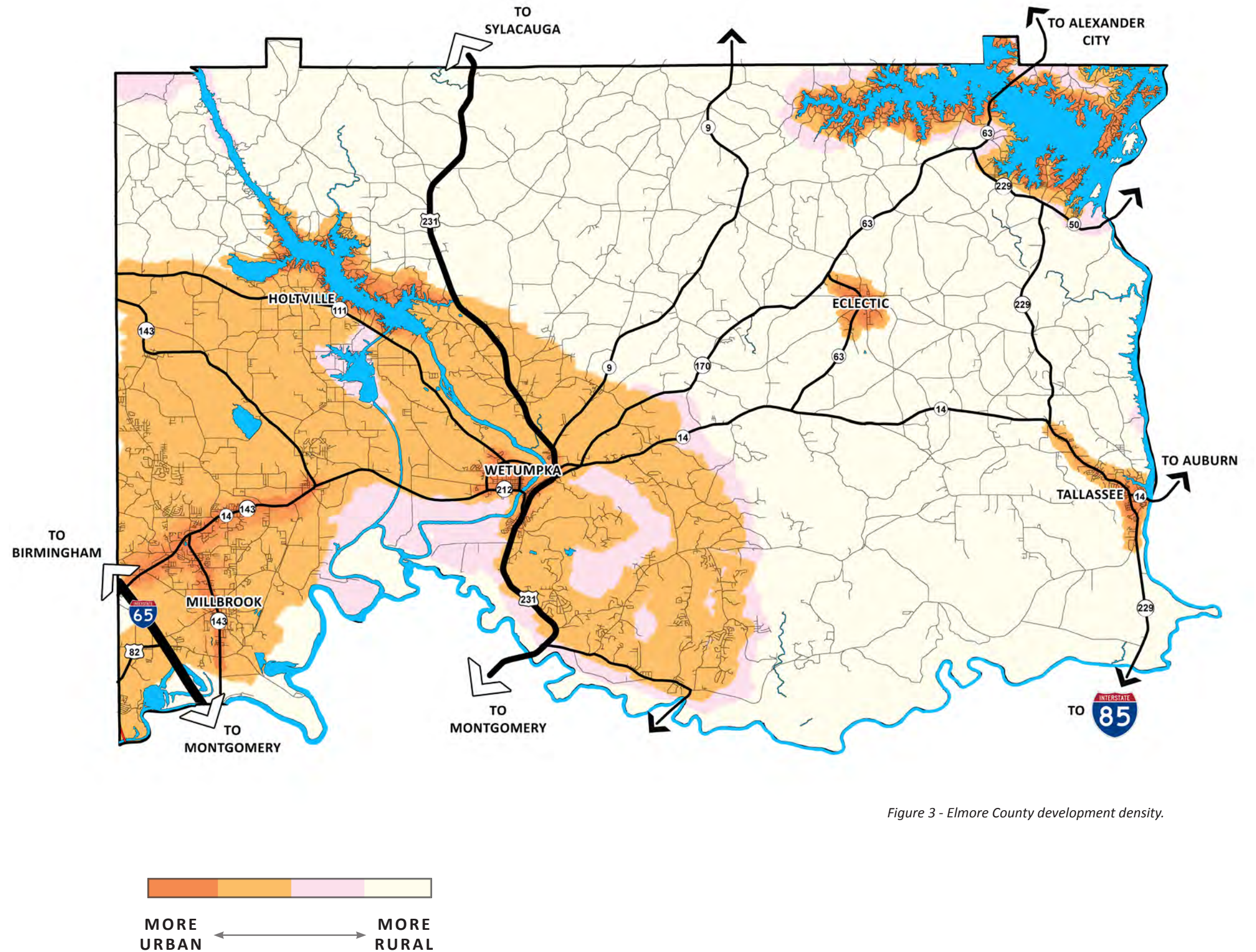


Figure 3 - Elmore County development density.

## Recreation

Elmore County has an abundance of recreation assets. For the purposes of this study, recreation activities were divided into three broad categories: water based activities, natural environment related activities and sports. As illustrated in Figure 4, the recreation activities are distributed across the county.

- Access to waterways dominates the county. Lake Jordan and the Coosa River, Lake Martin and the Tallapoosa River and Cooter's Pond and the Alabama River, provide numerous and varied water related recreation opportunities.
- Five 'anchor type' facilities are located in a geographically dispersed manner—Cooter's Pond, Lanark, Swayback Bridge Trails, Lake Martin and Yates Lake West Forever Wild parcel.
- Municipalities in Elmore County have developed recreation facilities for football, soccer, baseball and softball. In the unincorporated areas, local leagues use fields developed by community churches and the school system. The increasing popularity of soccer has increased the demand for soccer fields.
- Refer to Appendix A for a detailed listing of recreation facilities in Elmore County.

As noted in the listening sessions and field reconnaissance, Elmore County is especially diverse in the water-based recreation opportunities. Portions of the Coosa River in Wetumpka and Tallapoosa in Tallassee are suitable for Class II-V rapids. The Coosa, Tallapoosa and Alabama rivers are suitable for boating and fishing. Lake Martin and Lake Jordan accommodate recreational boating, skiing and fishing. A resident of Elmore County is within a 1-hour drive of any of these facilities.

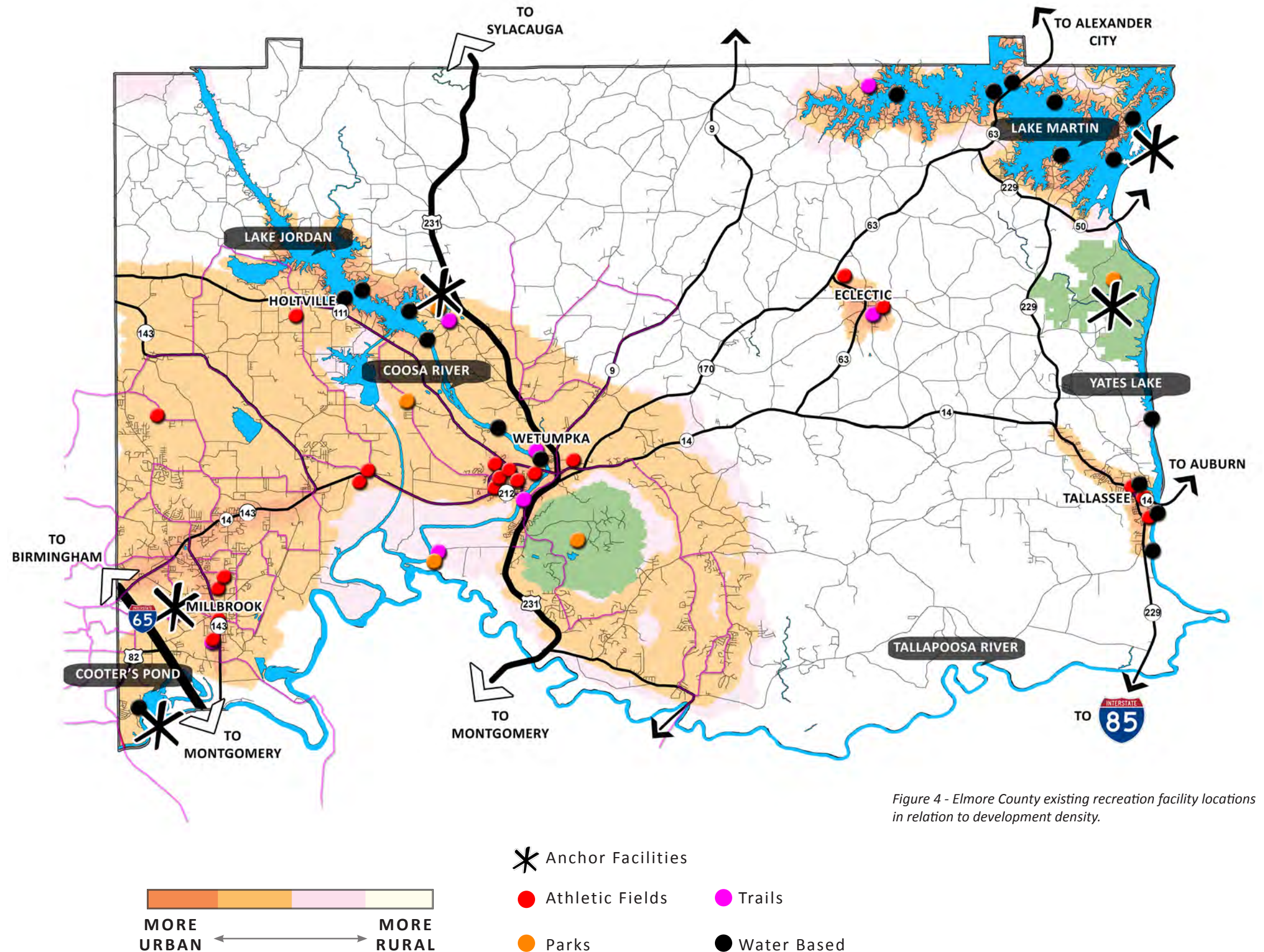


Figure 4 - Elmore County existing recreation facility locations in relation to development density.

## Listening Sessions

The planning team conducted four listening sessions in Holtville, Millbrook/Coosada, Wetumpka and Tallassee. The meetings engaged more than 45 participants. Citizens were asked to identify their top five recreation activities. The resulting rankings were as follows: 1-fishing, 2-kayaking, 3-biking, 4-walking, 5-canoeing.

See below a summary of comments from the listening sessions. See Appendix B for a more detailed record of the written comments from the listening sessions:

- In rural areas, the cost for youth athletes to participate can be a barrier. Leagues pay the school system for use of facilities which drives up the cost of participation. Uniforms plus equipment plus travel etc.
- Camp Grandview is an underutilized community asset
- In Tallassee, the citizens desire a youth ball field complex on the west side of the Tallapoosa River in Elmore County.
- Multi-use trail along Tallapoosa from Thurlow Dam to the boat ramp behind AES
- Yates Lake West is an underutilized asset
- Lake Martin area: Russell Lands has an extensive trail system that is available to the public via membership in the Russell Forest Trail Association, Inc. Golf cart, walking and equestrian trails are available.
- Swayback Bridge Trails: mountain biking is an opportunity with strong growth potential. Swayback Bridge Park could be developed into a greater use facility. The property lease arrangement with APCO is currently being renegotiated.
- Ft. Toulouse has an ambitious master plan for an interpretive center. The current priorities are the Bartram Trail and a new boat launch. Current boat launch is in poor/hazardous condition.
- Kayaking: can more white water facilities be developed in the Coosa River? Specifically closer to downtown Wetumpka with better access for spectator viewing? Moccasin Gap has limited accessibility and visibility.
- Proposed trail linking downtown Wetumpka and ball field complex on Hwy. 14.
- Corn Creek Park: residents want to retain access to the Coosa River at this location



Figure 5 - Listening Sessions



Figure 6 - Listening Sessions



# RECOMMENDATIONS FOR RECREATION DEVELOPMENT

## VISION

Create a framework for outdoor recreation in Elmore County that includes public access and services for county residents and provides economic, community development and tourism opportunities.

## GOALS

- **Provide access to outdoor recreation opportunities county wide:** Improve access to athletic fields in rural areas of the county.
- **Capture synergy through connected recreation facilities:** As illustrated in Figure 4, Elmore county has 5 major recreation sites which serve as ‘anchor’ sites. Cooter’s Pond, Lanark, Ft. Toulouse, Swayback Bridge Trails, Lake Martin, each location serves the river region residents and attracts visitors from outside the area and state. Elmore County could capitalize on the synergy generated by the proximity of these activities, generating opportunities for business growth and increased tax revenues.
- **Support economic and community development:** Easy access to the natural environment is a source of community pride for local residents.
- **Strengthen tourism infrastructure**



Figure 7 - Swayback Bridge, Old US Hwy. 31.  
Source: carterphotodesign.com

# RECREATION OPPORTUNITIES

A review of the role for Elmore County in the development of recreational resources reveals that the county is most suited to partnering with users groups to develop specific recreation facilities. Examples of this strategy include Swayback Bridge Trails and Corn Creek Park. The county may be able to provide land, grant writing expertise, or matching funds to facilitate development of recreation facilities. The associated non-profit group takes responsibility for facility management and maintenance.

To implement the recreation vision and goals there are three broad strategies described below:

- **Establish a County Recreation Advisory Group:** Establish an ‘advisory group’ made up of representatives from the eight municipalities and the five county commission districts. This group would be tasked with assisting the county commission with evaluating and prioritizing recreation facility development.
- **Identify Potential Projects**
  1. Crenshaw Park
  2. Corn Creek Coosa River Park
  3. Swayback Bridge Park
  4. Yates Lake West Wildlife Preserve
  5. Jackson Lake
  6. Fire Tower property
  7. Trails
  8. Holtville Park
- **Cultivate Tourism Opportunities**
  1. Eco-tourism and Nature-based tourism
  2. Growing tourism potential
  3. Way-finding system

## Crenshaw Park

The seven acre neighborhood park includes a ball field, restrooms and a pavilion. Activities at the park are governed by the Crenshaw Park Board, whose members are appointed by the county commission. The development of these facilities was originally accomplished with a federal grant. While there is significant local attachment to the park, vandalism is an on-going problem requiring constant maintenance of the park structures. The park also serves as a polling place and countywide cleanup site.



Figure 8 - Crenshaw Park Pavilion



Figure 9 - Crenshaw Park ballfield

## Corn Creek Park

The Coosa River Paddling Club partnered with the Elmore County to develop Coosa River access behind the Elmore County Justice Center. Access to the Coosa River at this location is currently being rerouted due to construction of the EMA Center on the Elmore County Justice Center campus. The Elmore County Engineering department is working with the Coosa River Paddling Club (CRPC) to reestablish vehicular access via a 12' wide unpaved road. The CRPC is responsible for all facility development and maintenance. This site would benefit from better signage as to its location and better site amenities such as picnic shelters and tables.



Figure 10 - Corn Creek Park provides access point to the Coosa River.



Figure 11 - Coosa River is a huge asset to the river region community.



Figure 12 - Trilium can be found among the picnic area that features fire pits and picnic tables.

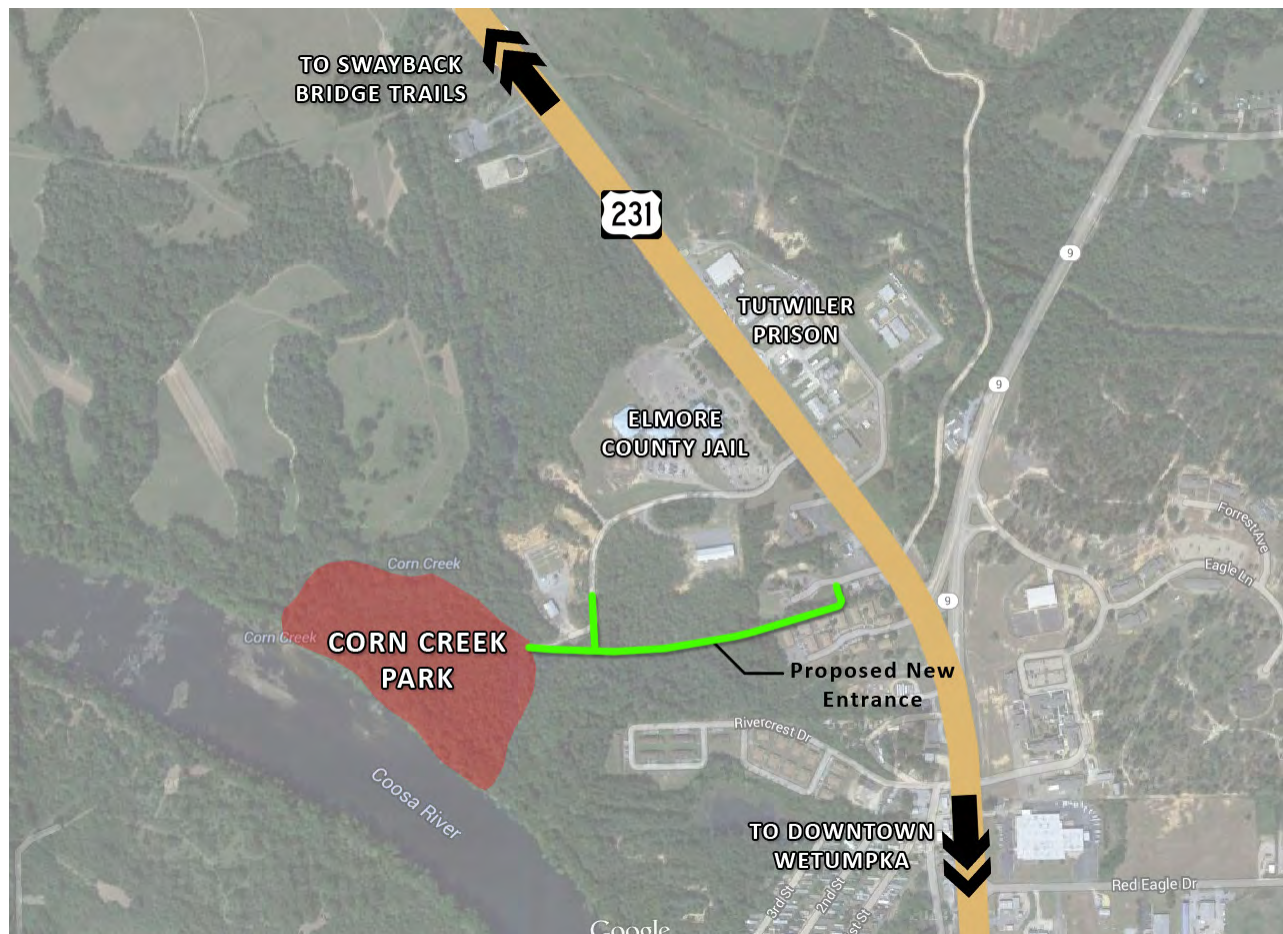


Figure 13 - Diagram of Corn Creek Park.

## Swayback Bridge Trails

The Swayback Bridge Trails for mountain biking and hiking were established in 1998. The trails are located north of Wetumpka on Lake Jordan, adjacent to the old US 231 'swayback bridge.' Vehicular access to the bridge is no longer allowed. The Trail of Legends Association (TOLA) has constructed and maintains over 12 miles of trails on land leased from Alabama Power Company (APCO). This facility attracts mountain bikers from the adjacent states, especially Florida. For mountain bikers from Florida, these trails are the closest location that engages hilly terrain. In addition to the trails there is an open-air pavilion and small parking area. Restrooms are not provided. Swayback Bridge Trails is a successful Elmore County partnership with a local volunteer group to develop recreation facilities.

Given the growth in mountain biking opportunities in Alabama, the enhancement of the current facilities at Swayback Bridge is desirable. An expansion of complementary activities available at the site would increase its attractiveness to users. A list of potential park enhancements includes:

- Investigate leasing adjacent APCO land for recreation
- Consider adding primitive, tent and RV camping facilities
- Add additional pavilions and restrooms for park use
- Consider a zip line-tree canopy course
- Develop equestrian trails



*Figure 14 - Existing pavilions at Swayback Bridge Park.*

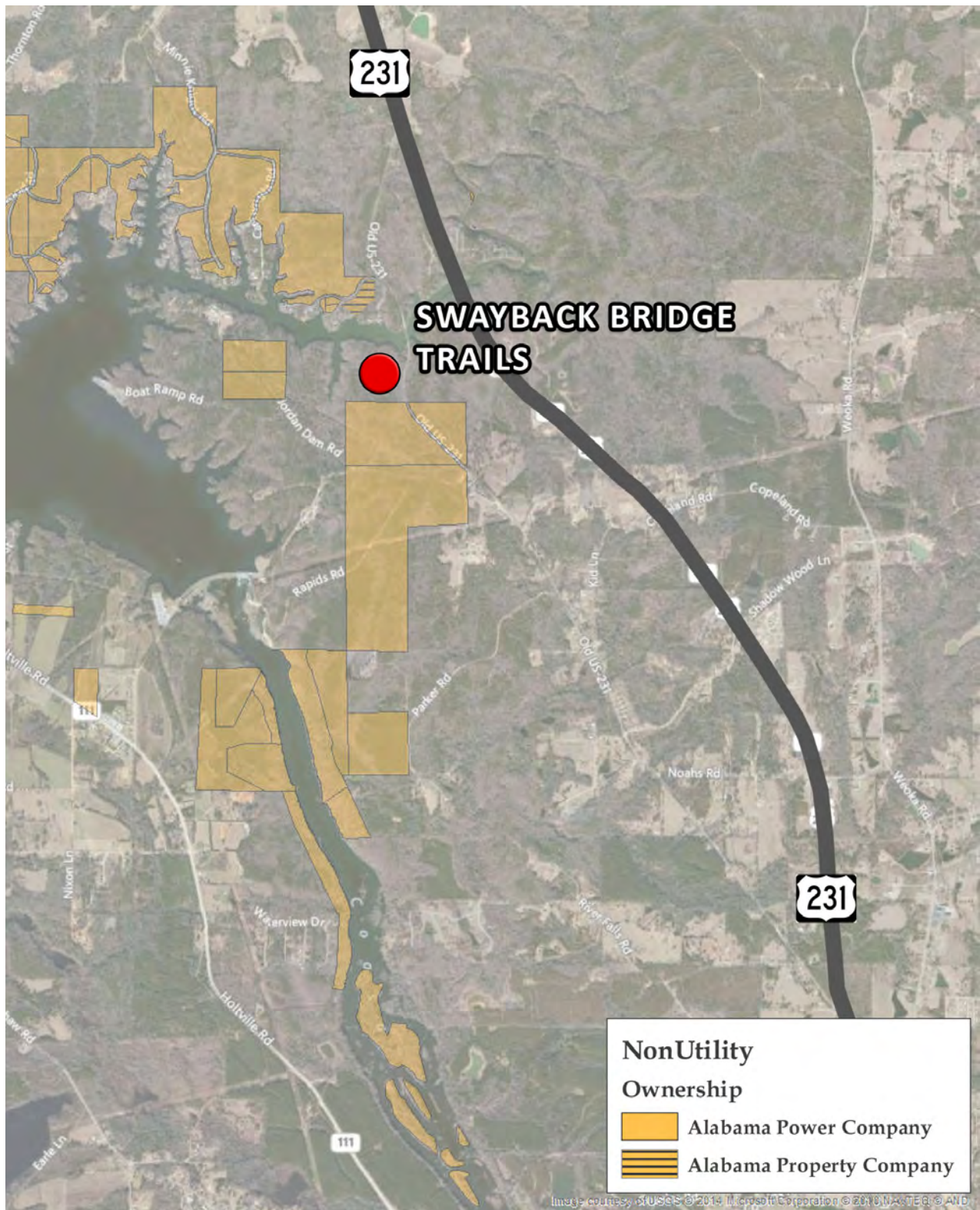


Figure 15 - Aerial photo depicting Alabama Power Company owned land.  
Source: Southern Company

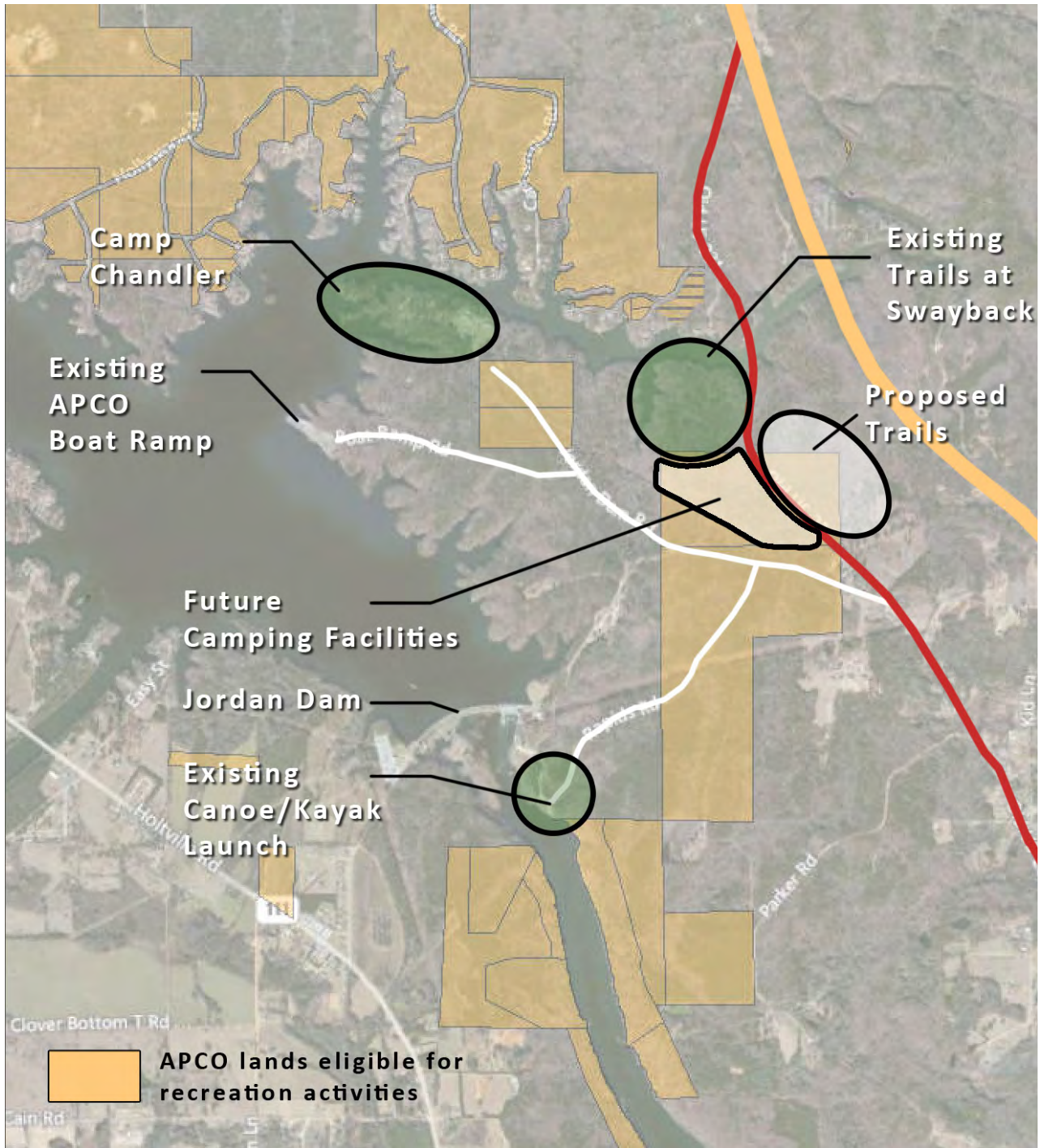


Figure 16 - Diagram for Swayback Bridge Trails and Park.

## Yates Lake West Preserve

Forever Wild Gothard-AWF Yates Lake Wildlife Management Area is a 5,493 acre tract in the northeast quadrant of the county adjacent to Yates Lake, south of the Lake Martin Dam. The Alabama Department of Conservation and Natural Resources is currently developing a wildlife and land management plan for the property. In keeping with the purpose of the Forever Wild program, this is land with public access and will be managed for natural, biological diversity, hunting and environmental education. This is an opportunity for Elmore County to partner with ADCNR/Forever Wild to enhance access to this fine example of pine-hardwood hills and creek valleys. The site includes longleaf pine and mature hardwood creek bottom habitats. This site is suitable for the following activities:

- Boat ramp
- Hiking trails
- Primitive and tent camping
- Fishing
- Birding
- Signage
- Equestrian trails

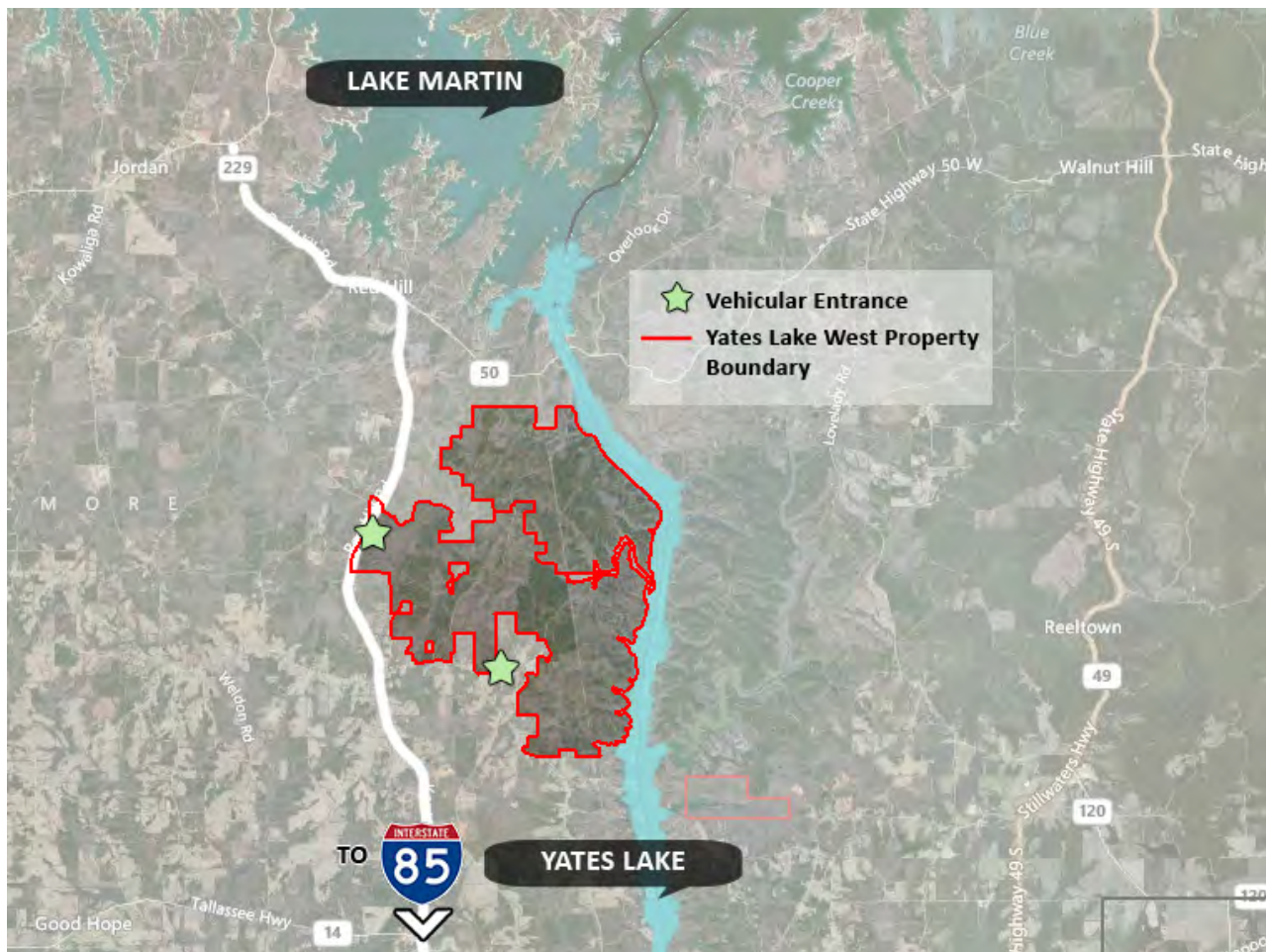


Figure 17 - Yates Lake West locator map.

## Jackson Lake

A private developer has prepared a master plan for a marina, camping (primitive and RV) and other recreational activities on Jackson Lake. The 8-lane boat ramp is one aspect of the project which Elmore county could consider partnering with the property owner to enhance public access to the lake in the southwest portion of the county.

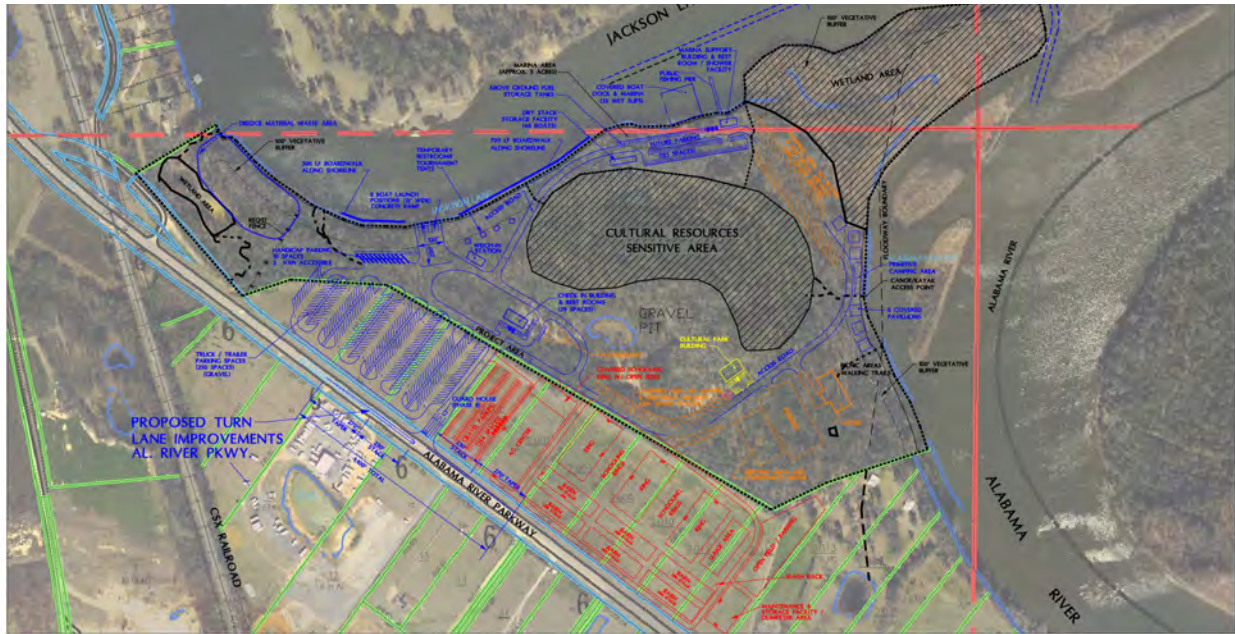


Figure 19 - A conceptual master plan of Jackson Lake prepared by Larry E. Speaks and Associates, Inc.

## Fire Tower Property

This 10 acre parcel of county owned land is located along the rim of the Wetumpka impact crater. The site includes a fire tower structure of uncertain condition. This site is densely wooded. This site presents the opportunity to create a viewing station for a portion of the impact crater at a level above the tree line.



Figure 18 - Fire Tower Property includes a 10 acre parcel located on Firetower Road in Wetumpka.



## Trails

The design team identified several potential trail projects in Elmore County. Several projects were mentioned in the public involvement sessions. Potential trail connections are described below.

1. Tallassee-north: Extend the trails north of downtown along Yates Lake to the Yates Lake nature Preserve. **Estimated Length: 7 miles**
2. Tallassee-South: Extend trails south of the APCO Thurlow Dam along the Tallapoosa River to the boat ramp at AES. **Estimated Length: 1.7 miles**
3. Wetumpka, downtown to ball field complex: extend a walking trial on the west side of the Coosa River from the Bibb Graves Bridge to the sports field complex on Hwy 14. **Estimated Length: 1.5 miles**
4. Wetumpka-north to Jordan Dam: provide a trail from downtown Wetumpka north to Jordan dam. **Estimated Length: 6.75 miles**
5. Wetumpka –south to Ft. Toulouse: provide a trail south from downtown Wetumpka to Ft. Toulouse on the east side of the river. **Estimated Length: 5.25 miles**
6. Wetumpka to Elmore: develop the abandoned rail line between Wetumpka and the town of Elmore. **Estimated Length: 6 miles**

The Montgomery MPO Bicycle and Pedestrian Plan, denoted by solid red lines on the map below, identifies proposed on-road bicycle facilities in Elmore County. The installation of ‘Share the Road’ signs is a cost effective means to achieve this goal.

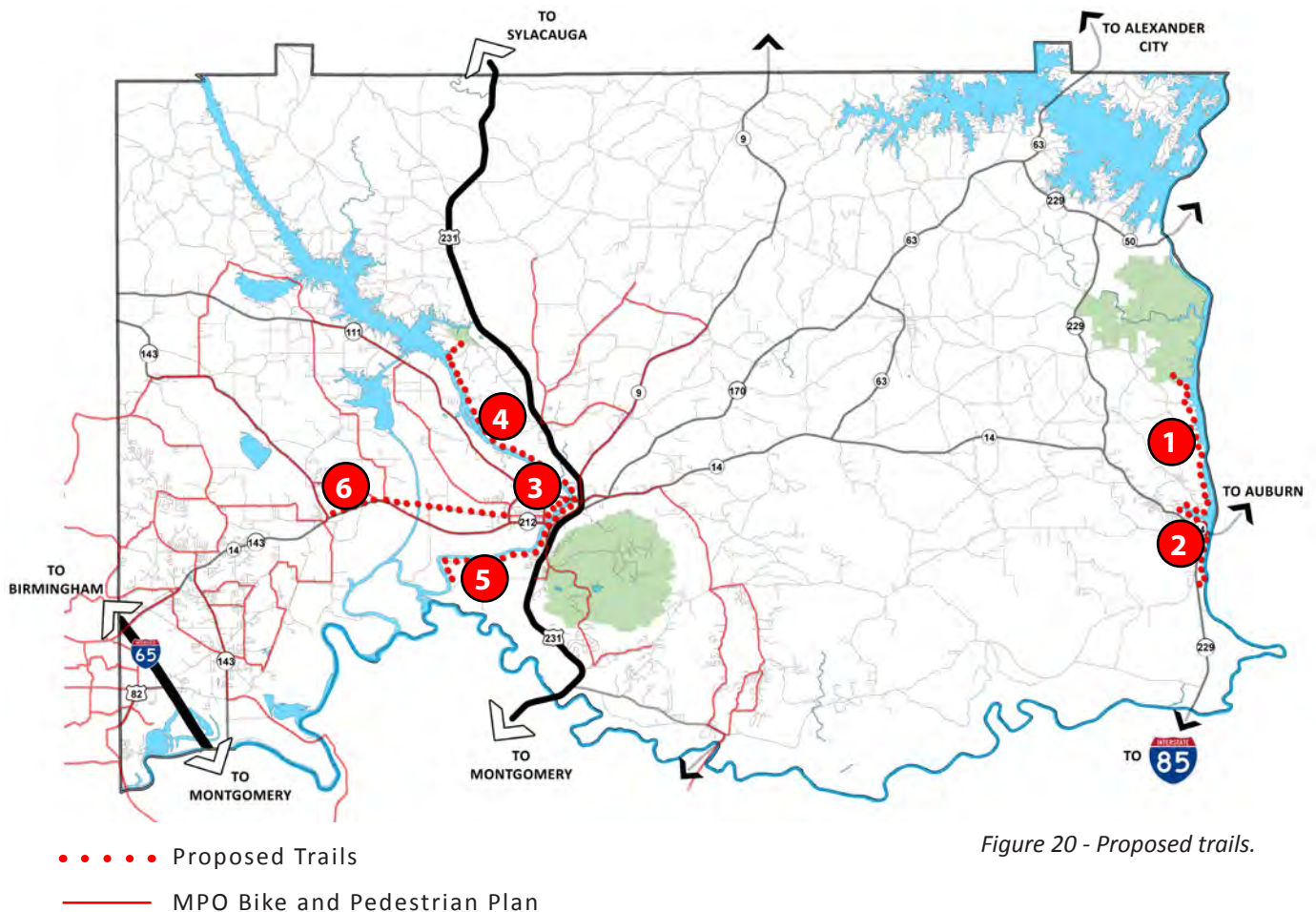


Figure 20 - Proposed trails.

## Holtville Park

This 27 acre park is located on Alabama Power Company owned property. It serves Holtville and the surrounding communities by providing boat access to Lake Jordan and passive recreation activities. After years of being managed by a private group, the park was recently closed due to frequent loitering and vandalism. However, as the park has proved to be very important to the community, options are currently being explored with the Department of Natural Resources to reopen the park with a stronger security presence.

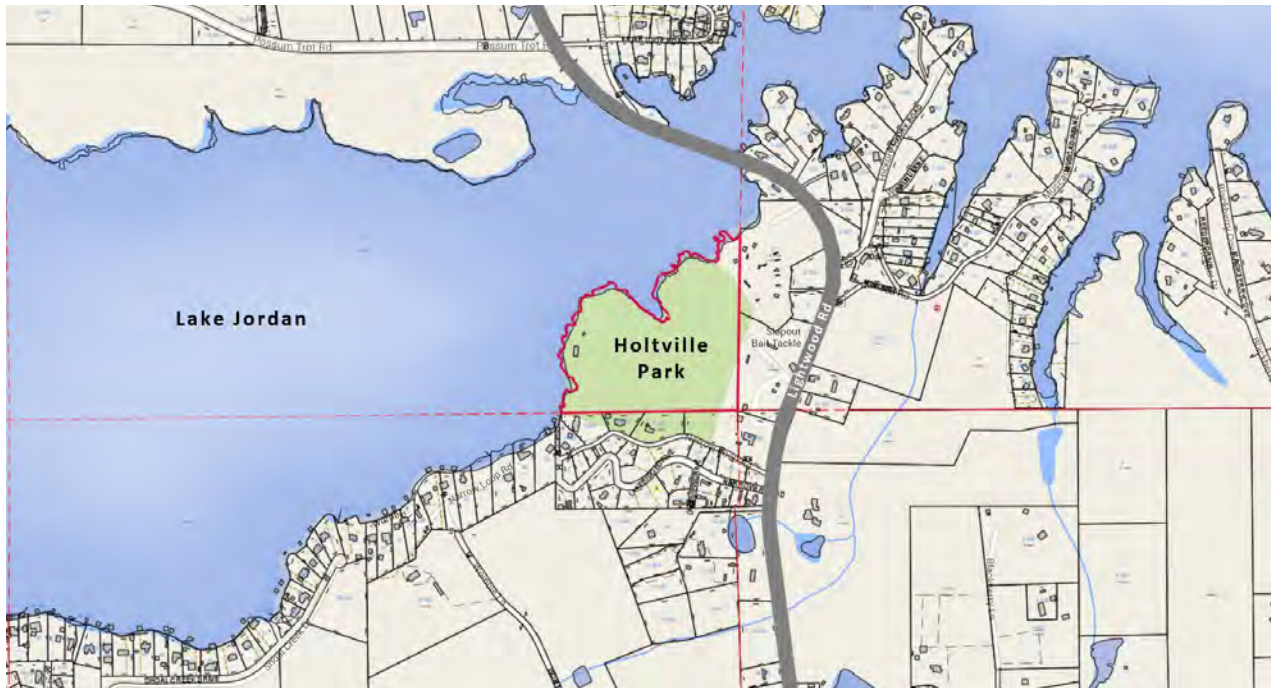


Figure 21 - Map of Holtville Park.

# TOURISM OPPORTUNITIES

Elmore County, situated in Central Alabama, provides a perfect backdrop for both ecotourism and nature based tourism destinations. A significant portion of the county’s land base is wetlands, which provide critical habitat for many threatened and endangered species, as well as an abundance of waterfowl and migratory birds. Elmore County also has a rich Native American and a long history of residents making a living off the land through agriculture, forestry, and fishing.

It is well known that tourism is becoming an increasingly key driver of sustainable economic growth for many locations in Alabama – including Elmore County. Elmore County has an abundance of natural and historic assets that are attractive to tourists, such as the Alabama Nature Center at Lanark, Fort Toulouse, Lake Jordan, Lake Martin, two Alabama Forever Wild properties, Swayback Bridge Trails, and the Elmore Impact Crater. To maximize the impact of these unique opportunities, well-designed infrastructure is essential to ensure that tourists have a safe, comfortable and positive experience to recommend to others. By implementing a collaborative Elmore County Tourism marketing strategy the county and its municipalities will be able to affectively promote these unique ecological/nature based recreational opportunities to the general public. Increasing tourist numbers increases the amount of capital brought into a county, which encourages economic development by creating business and job opportunities for local citizens.

Recognizing the importance of these natural and cultural resources, Elmore County should consider adopting ecotourism and nature based tourism as part of an overall economic development strategy. The formation of a tourism oversight committee comprised of representatives from local, state and federal government agencies; non-profit organizations; and local business owners working together to promote and protect Elmore County’s vast natural resources through tourism, in a manner that benefits the local economy and pays tribute to the region’s rich cultural heritage will reap great benefits if properly formed and aggressively maintained.

## **Ecotourism Based Assets and Elmore County**

Ecotourism is one of the fastest growing industries in the United States today. It is defined as “responsible travel to natural areas that conserves the environment and improves the well-being of local people.” While “nature-based tourism” is simply described as travel to natural places, ecotourism is a type of nature-based tourism that benefits local communities and destinations environmentally, culturally and economically.

Ecotourism is about uniting conservation, communities, and sustainable travel. This means that those who implement and participate in ecotourism activities should follow the following ecotourism principles:

- Minimize impact.
- Build environmental and cultural awareness and respect.
- Provide positive experiences for both visitors and hosts.
- Provide direct financial benefits for conservation.
- Provide financial benefits and empowerment for local people.
- Raise sensitivity to host countries’ political, environmental, and social climate.

It should be noted that ecotourism is a growing segment of the national tourism industry that is making significant positive contributions to the environmental, social, cultural and economic well-being of destinations and local communities around the nation. Offering market-linked long-term solutions, ecotourism provides effective economic incentives for conserving and enhancing bio-cultural diversity and helps protect the natural and cultural heritage of important sites.

Incorporating educational elements into an ecotourism project has many direct and indirect benefits, some of which are:

- It requires trained experts with a fully understanding of the environment to be involved.
- It broadens the experience for visitors, which creates a larger customer market.
- There are different levels of educational experiences a site might offer, and these levels should be tailored to the audiences they are seeking.
- Education about the immediate environment is a great way to simultaneously educate about the local community, its people, and its history. This encourages the customer to become a part of the community and they are more likely to spend more time and money in the community.
- Provides a chance to show uniqueness of the community to the visitors.
- Funding opportunities are opened up when research is carried out at the site. Federal, State, University, and private grants are available to help fund many different aspects of the park if research is involved.

### **The Alabama Nature Center**

A prime example of such an opportunity that exists within Elmore County is the Alabama Nature Center, located in Millbrook, Alabama. This destination is a Planned-Use Outdoor Education Facility offering hands-on, outdoor-based educational programs and activities for students, educators, church and civic groups, and the general public.

The Alabama Nature Center contains approximately 350 acres of forests, fields, streams, and wetlands that are crisscrossed by five miles of boardwalks and trails in three regions: Still Creek Run, Turkey Ridge, and Hilltop Pass. The Alabama Nature Center can be reserved for school field trips, teacher training workshops, seminars, and other educational programs that are scheduled in advance with the Alabama Wildlife Federation.



Figure 22 - Boardwalk through bottomland hardwoods.  
Source: naturebridges.com

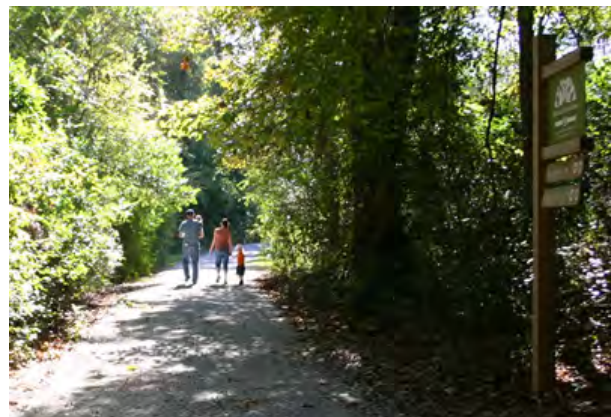


Figure 23 - Walking/Hiking Trails.  
Source: wetumpkachamber.com



Figure 24 - Interpretive signage along the trails.  
Source: naturebridges.com



Figure 25 - Students participating in the Wetland Wildlife program. Source: wetumpkachamber.com

### Wetumpka Impact Crater

Another excellent example of a potential ecotourism site with Elmore County is located in Wetumpka, Alabama. The Wetumpka Impact Crater has the potential to provide an opportunity to view the remains of the greatest natural disaster in Alabama’s history. The hills just east of downtown are all the remains of the remnants of a five-mile-wide impact crater that was created some approximate 85 million years ago. This site is located adjacent to U.S. 231 from downtown Wetumpka.

It should be noted that the Wetumpka Impact Crater is one of few above-ground impact crater locations in the United States and one of only about six in the entire world. Auburn University Professor David King has remarked that the Elmore County impact crater site hosts one of the best examples of a preserved marine impact crater in existence. This unique site provides Elmore County an extremely rare opportunity to capitalize on this site as a potential ecotourism location. As stated in Governor Bob Riley’s 2007 proclamation, “the crater has brought Wetumpka, Alabama to the forefront of the international geological society and has become an important teaching and tourism resource.”



Figure 26 - Master plan for the Impact Crater Interpretive Center site.



Figure 27 - A view across the impact crater.  
Source: thunderbolts.info

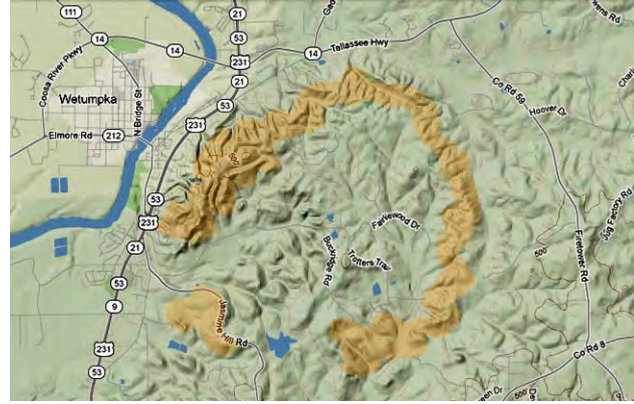


Figure 28 - The approximate extents of the crater rim.

## Nature Based Tourism Assets and Elmore County

Another opportunity which exists within Elmore County is nature based tourism. Nature based tourism is defined as responsible travel to natural areas, which conserves the environment and improves the welfare of local people. It is tourism based on the natural attractions of an area. Examples of such sites and activities within Elmore County include mountain biking, trail running, bird watching, photography, camping, hiking, hunting, fishing, and boating. Such nature based tourists are interested in a diversity of natural and cultural resources; many of which Elmore County offers. They want what is real, and they want to be engrossed in a rich natural, cultural, or historical experience.

Nature-based tourism provides incentives for local communities and landowners to conserve wildlife habitats upon which the industry depends – it promotes conservation by placing an increased value on remaining natural areas. As nature tourism becomes more important to the local economy, communities have additional incentive to conserve their remaining natural areas for wildlife and wildlife enthusiasts. The goals of nature-based tourism are to: promote habitat conservation, promote sustainable economic development, and build broad-based public support for wildlife conservation programs.

### Robert Trent Jones Golf Trail - Capitol Hill

Robert Trent Jones Golf @ Capitol Hill, located in Southwestern Elmore County, is annually named one of the top public golf courses in the nation. This course is part of the highly popular Robert Trent Jones Golf Trail and features three 18 hole championship courses on more than 1500 acres along the beautiful Alabama River. The changes in elevation around the course allow for breath taking views of the unique landscape, as well as, downtown Montgomery.

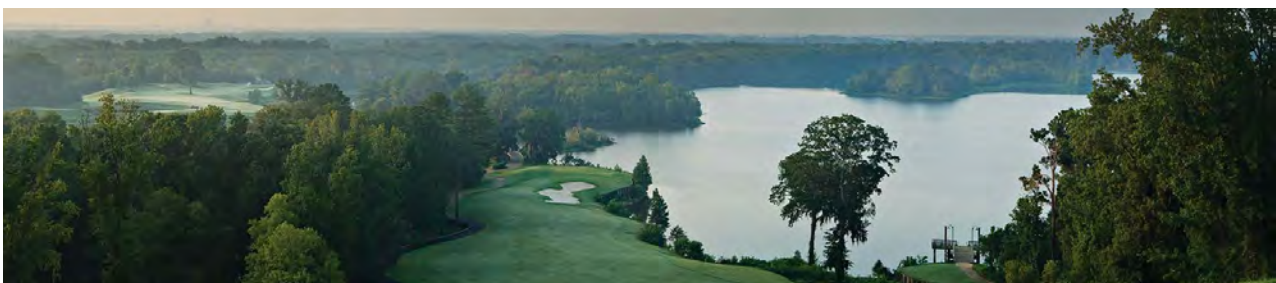


Figure 29 - Robert Trent Jones Golf Trail @ Capitol Hill  
Source: rtjgolf.com

## **Yates Lake West Preserve**

Yates Lake West, an Alabama Forever Wild Property in Elmore County consists of 5,493 acres of pine-hardwood hills and creek valleys on the western shore of Yates Lake. Habitat components include longleaf pine stands and mature hardwood creek bottoms, as well as the protection of 7 miles of shoreline along the Tallapoosa River. The tract is managed for a broad assortment of public recreational opportunities, such as hunting and fishing, as a nature preserve and an environmental education study area. In 2010, the tract was designated as a Community Hunting Area by the Alabama Department of Conservation and Natural Resources. Currently a land use plan is being developed for further property development.

These forests, open fields, streams, ravines and the bottomland hardwoods along the Tallapoosa River all provide diverse natural habitats waiting to be discovered, explored and enjoyed. Access through the tract is by foot or horse back. Currently there are no established trails through the woods other than old logging roads. No off-road vehicles, metal detectors, digging tools, camping or hunting are allowed on the property.

## **Fort Toulouse**

A second Alabama Forever Wild Property in Elmore County includes the Fort Toulouse tract consisting of 254 acres. The Fort Toulouse Tract was purchased to provide outdoor recreational opportunities for the public, to protect the diverse natural communities of the site, to provide opportunities for ecological education and to protect and interpret significant historic features of the immediate area.

Neighboring the Fort Toulouse Alabama Forever Wild site is the Fort Toulouse-Jackson National Historic Park. This park site offers 165 acres of property with attractions such as the French and American frontier forts, a Mississippian era Indian mound, the William Bartram Interpretive Arboretum trail, and an interactive museum featuring archaeological collections from French colonial, early American and prehistoric Indian items. The site also hosts a full service 39-site campground overlooking the Coosa River and a boat launch into the Tallapoosa River.



*Figure 30 - Trails at Fort Toulouse. Source: alabamabirdingtrails.com*



Figure 31 - Replica of the French Fort used to protect their territory from the British during the eighteenth century. Source: [encyclopediaofalabama.org](http://encyclopediaofalabama.org)



Figure 32 - An out building used for storage during the French and Indian War. Source: UACED



Figure 33 - The grounds of Fort Toulouse. Source: [alabamabirdingtrails.com](http://alabamabirdingtrails.com)



## Swayback Bridge Trails

Unique to Elmore County is the Swayback Bridge Trail system. It is open only to mountain bikers and hikers; no horses or motorized vehicles of any kind are permitted. This site offers approximately 12-miles of trail along the hilly shores of Lake Jordan. The trail system includes four different loop trips and consists mostly of well-groomed single-track trails with fire road and power line sections. The terrain varies from rocky, tight single-track to all-out big ring sections. The Swayback Bridge Trail is managed by the Trail of Legends Association (TOLA), a nonprofit organization formed in 1993 whose mission is to create trails in Elmore County. In 1995, TOLA changed its charter to become a statewide organization. TOLA now offers guidance in creating trail organizations in other communities throughout Alabama and assists in developing and building trails that will eventually make up a statewide trail system.



Figure 34 - One of the hiking/biking trails at Swayback Bridge.

Source: panoramio.com



Figure 35 - Biking tournament held on the trails.

Source: panoramio.com



Figure 36 - Trail head at Swayback Bridge.

Source: panoramio.com

## Lake Jordan

Another distinctive outdoor recreational opportunity within Elmore County is Lake Jordan. This is a 6,800-acre impoundment on the Coosa River with 188 miles of shoreline. The Mitchell Dam tail water area at the upper end of the lake is a popular recreational area to many anglers with ample bank fishing access. Lake Jordan was impounded by Alabama Power Company in 1928; however, in 1967, Bouldin Dam was completed which impounded an adjacent basin that connects Lake Jordan by a short canal. Lake Jordan is very fertile and supports high densities of sport fish and forage species. The lake was constructed to provide flood control, and supply hydroelectricity; however, the lake has become very popular for various types of recreation including boating, swimming and fishing.

Public and private boat ramps, as well as several private marinas provide access to Lake Jordan. Two popular public boating access areas include Bonner's Point on the west side of the lake and Rotary Landing to the east. Several private marinas located on the main lake and up river near Mitchell Dam also include boat ramps.



Figure 37 - Lake Jordan.  
Source: carterphotodesign.com



Figure 38 - Recreation on Lake Jordan.  
Source: carterphotodesign.com



Figure 39 - Tournament fishing on Lake Jordan.  
Source: bassmasters.com

## Lake Martin

Located in the Northeastern quadrant of the county, Lake Martin is a 39,180-acre impoundment on the Tallapoosa River with approximately 700 miles of shoreline. Lake Martin is one of the most popular recreational reservoirs in Alabama attracting hundreds of thousands of visitors annually. Alabama Power Company impounded the waters of the Tallapoosa River in 1926 near Cherokee Bluffs, on the Elmore and Tallapoosa county border, to form Lake Martin. The lake was constructed primarily for flood control and to supply hydroelectric power to Alabama residents, but it also provides ample recreational opportunities to anglers and boaters.

Wind Creek Marina, located in Tallapoosa County, has a bass weigh station. Private boating access areas and marinas are numerous on Lake Martin; however, many public facilities also exist. The State of Alabama Department of Conservation operates facilities at Wind Creek State Park, Smith Landing on Sandy Creek, Mad-wind Creek, Kowaliga Creek, and Pace's Point near Camp Alamisco.

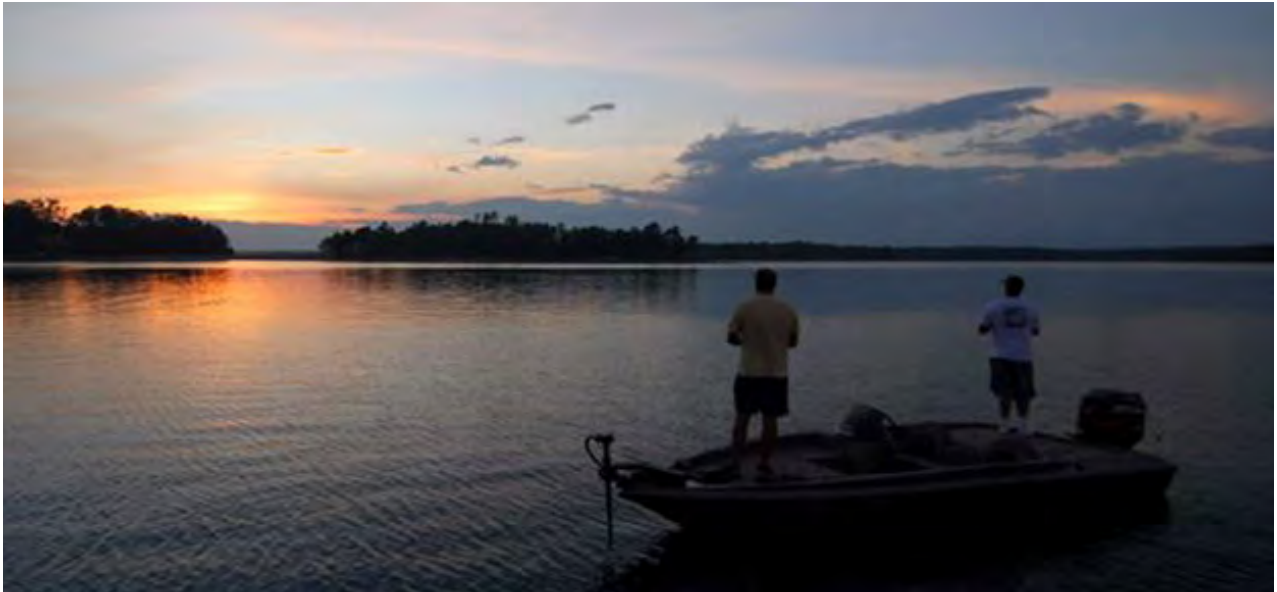


Figure 40 - Sunset on Lake Martin.  
Source: [homeonlakemartin.com](http://homeonlakemartin.com)



Figure 41 - Real Island Marina on Lake Martin.  
Source: [panoramio.com](http://panoramio.com)



Figure 42 - Aquapalooza @ Kowaliga Marina on Lake Martin. Source: [alexcityoutook.com](http://alexcityoutook.com)

## Growing Tourism Potential

### Create an organizational structure

The first step in growing tourism potential for Elmore County is to form an active Tourism Council made up of representatives from around the county that meets regularly to discuss goals and tasks. Committee members might include a representative from: the Chamber of Commerce, City Hall, County Commission, Destinations, Economic Development, Lodging, Media, Retail and Restaurants. Without a formal structure, the likelihood of losing momentum is increased greatly as well as confusion on who will follow through with tasks. If you are going to be serious about tourism development, you must have a group focused on it for longevity and to focus on the following tasks:

- **Take an inventory of tourism assets**

After creating an organizational structure, compile an inventory of tourism assets in the county of existing and potential attractions that will draw tourists to Elmore County. In addition to attractions, include places of natural/scenic significance and places tourists can be exposed to local history, culture, and nature. Attractions also include intangibles, such as friendly service, a safe environment, or a unique history and/or culture.

As you inventory assets, don't forget that the people who live in your community can help. Involving them can increase the level of support from the community, which is vital to creating a successful tourism industry. Include what surrounding counties have to offer that can enhance a tourist's experience.

- **Evaluate and prioritize top attractions**

Evaluate and prioritize significant places and top destinations from the inventory based on their quality, authenticity, uniqueness, ability to generate multiple activities, and their drawing power. A good start is to identify the top ten tourism assets in promotional materials.

- **Expand Stay of Visitor**

To keep tourists for a longer period of time, find common themes from the tourism asset inventory and create tours around them with a minimum of three venues on that tour. For example, to strengthen outdoor opportunities perhaps a nature trail theme would connect an Alabama Birding Trail Site, with a hiking trail at the park, and an eatery to pack a picnic lunch.

Then, expand the outreach to day trips where Elmore County is the location for lodging and evening meals. Be sure to include supporting amenities such as attractions, shopping venues and eateries to the themed tours. The tours can then be printed as promotional materials and distributed at high traffic areas.

### • **Joint Marketing**

Facilitate the process of different organizations purchasing promotional material together. The sphere of influence with shared contacts and outlets are greatly increased by joint marketing. Each party has a feeling of ownership in the venture and at the same time, conveys commitment to the viewer that tourism has the support of established businesses in the community. Some ways to do this are:

- An interactive county wide calendar of events. This allows you to plan out the best time to create new events and also where to place complimentary events next to successful established events, causing visitors to stay multiple days.
  - Jointly purchase radio spots and newspaper advertisements to promote the calendar and encourage locals to add their events to the page. This creates an event inventory and insight to where further development is needed.
- Link your website and ask for a return link to surrounding area tourism sites and organizations.
  - Create a social media presence and keep it current.
  - Organizations that already have a social media presence can invite people to the page.
  - To encourage more activity, offer give-a-ways or create contests that also help build marketing material such as a photo contest.
- Create a visitor's guide to showcase Elmore County to a larger area.
  - Link any promotional piece back to the community calendar of events and social media to ensure cross marketing and expanded outreach.
  - Create digital copies of all promotional pieces to place on the website and social media outlets.
- Partner with larger organizations such as the Alabama Tourism Department (<http://tourism.alabama.gov/>) so that you are informed of the latest tourism trends through newsletters, calendar of events, grants and leads on group tour inquiries near your area.
- Facilitate a branding process to create like-mindedness about what is unique about Elmore County and how to best market it.

### • **Make tourists repeat customers**

- Collect ZIP codes or country of origin to determine where your visitors are coming from / where your marketing dollars are reaching.
- Collect an email address to have instant access (via email and social media)
- Email follow-up surveys; ask if they will complete a short customer service survey to get immediate feedback on what you did well and areas that need improvement.
- Create great customer service by identifying high traffic areas to place hospitality sheets with frequently asked questions to empower the employees of that venue with knowledge on the area, while also creating a better visitor experience.

## Way-finding System

The scenic beauty and recreational opportunities of Alabama attract millions of visitors to the state every year. The state’s recreation industry has blossomed into a powerful economic force: the Outdoor Industry Foundation estimates that outdoor enthusiasts contribute an approximate \$7.5 billion economic impact within the state of Alabama, along with the generation of 86,000 jobs and \$494 million in state and local tax revenue. These economic impacts affect not only larger recreation hubs such as Lake Martin, but also smaller towns and communities where travelers enjoy access to retail, restaurants and lodging as well as nearby trails or parks. Many rural communities in Alabama and across the U.S. have made a name for themselves as destinations of stunning natural beauty with easy access to outdoor activities. Recreational travelers may be going on a day hike, looking for a place to stay during a bike tour, or launching a kayak for a river trip. All of these users are potential customers at restaurants, grocery stores, outdoor outfitters, hotels and other local businesses. Often, however, there is little connection made between rural areas, downtowns, and the trails or recreational opportunities around them. In order to strengthen nature-based/recreational tourism as an economic development strategy, Elmore County must make a conscious effort to develop and market existing recreational resources as a destination, provide retail cores that serve tourist needs, and make clear connections between the two by the implementation of a countywide way-finding system.

### What is Way-finding?

Way-finding can be defined as spatial problem solving. It is knowing where you are in an environment, knowing where your desired location is, and knowing how to get there from your present location. These cues should be well planned, seamlessly connected, and aesthetically pleasing, creating a positive first impression and a sense of security, comfort and well-being. The best way way-finding systems feature consistent standards that can be adapted and altered as required to locate existing destinations plus adapt to feature future development. Creating a consistent and recognizable graphics and placement standard results in a system that responds to the goals and planning vision, and ensures the system is comprehensive and appears neither fragmented nor piecemeal. A high-functioning way-finding system makes the environment “legible” and enhances the visors’ experience as it increases their comfort, builds their confidence, and encourages them to discover unique events, attractions and destinations on their own.



Figure 43 - Decatur, AL way-finding system.  
Source: mccommgroup.com



Figure 44 - Decatur, AL way-finding system.  
Source: mccommgroup.com

### Principles for effective way-finding include:

- Create an identity at each location.
- Use landmarks to provide orientation cues and memorable locations.
- Don't give the user too many choices in navigation. Create a comprehensive, clear and consistent visual communication system with concise messaging.
- Use sight lines to show what's ahead.

Currently, within Elmore County, there is a lack of consistency in physical design, frequency of signs, and no conceptual connection between types of signage. For travelers, there is no consistent look and feel that helps them get from place to place, and also encourages them to feel that they are in a place that is pleasant and cares to make traveling easier and more enjoyable.

By implementing a countywide way-finding system, Elmore County will be able to increase its perception as an outstanding destination for recreational activities that is simple for visitors to navigate and as a place to visit for the overall beauty of the area. A countywide way-finding plan would create a way-finding signage system for Elmore County. Potentially it would include a comprehensive directional arrangement and interpretive signage scheme for pedestrians, cyclists, and automobile users in an effort to direct visitors to notable areas of interest within the county. The plan should concentrate on “the gateway areas into Elmore County and main routes within the urbanized and rural areas” that are most likely to be traveled by visitors.

**Objectives of an Elmore County way-finding and interpretive signage plan include:**

- Create and implement a user-friendly and visible multimodal navigational system that will guide visitors and residents to and from Elmore County destinations.
- Develop a unifying brand for the community that can be reflected in physical and virtual way-finding systems and carried throughout other aspects of the community visitor marketing efforts.
- Enhance the success and market potential for recreation, heritage, natural venues and to promote economic development.
- Develop a system that can be implemented by both Elmore County and each of the municipalities within its borders.



# STRATEGIES FOR IMPLEMENTATION

## Critical Steps in Implementation

The implementation of the recommendations in the OUTDOOR ELMORE report requires several critical steps, including:

1. A commitment to the development of Elmore County's outdoor recreation assets as embodied in the plan;
2. Adoption of the recommendations by the Elmore County Commission
3. Formation of a public-private advisory committee

## Plan Adoption and On-going Project Planning

Adoption of the report by the Elmore County Commission is an important step in implementation. Continuous review and updating of the Recreation plan is essential to responsible implementation. Such updating should be done as needed and at least every five years. Annual reports should be made to the County Commission. Regular meetings of the advisory committee should also be considered to provide input to the county Commission as needed.

Establishment of an advisory committee on all matters related to the development of public recreation resources would be helpful to the commission. One task the committee would perform is to evaluate specific potential recreation projects for their viability and benefit to county residents. The advisory committee should include:

- Representatives from municipalities in Elmore County
- Elmore County engineering Department
- Representatives from user groups such as TOLA, kayaking groups, etc.
- Chambers of Commerce

## Implementation Tools

Implementation of the recommendations in the OUTDOOR ELMORE study may be facilitated by funding from the following programs:

- **Land and Water Conservation Fund** – The U. S. Department of Interior, Land and Water Conservation Fund (LWCF) provides funding to Alabama cities and counties for the development or establishment of outdoor recreational areas. Projects include parks, playgrounds, forest and wildlife refuges, recreational lakes and ponds, outdoor playing fields, and picnic and camping areas. The program is 50/50 and the maximum grant amount is \$50,000. All municipalities, counties and state agencies are eligible. The LWCF grant program is administered by ADECA.
- **Recreational Trails Program** – This program of the U.S. Department of the Interior is directed toward development of trails by municipalities, counties, state agencies or nonprofit organizations for walking, jogging, cycling, skating, hiking, off-road vehicles and horseback riding. The program is administered by ADECA. Typical projects are \$50,000 --\$100,000 in value and require a 20% match. Land acquisition is an eligible activity.

- **CDBG Enhancement Funds** – The program is available to all Non-Entitlement communities that meet applicable threshold requirements. All projects must meet one of the National Objectives of the program: (1) projects must benefit 51 percent low- and moderate-income people, or (2) aid in the prevention or clearance of slum and blight, or (3) meet an urgent need. This fund is available to all eligible communities to use for projects that address quality of life issues. The grant deadline occurs in the late spring of each calendar year. The Grant Ceiling is \$250,000, requires a 10% match and typical activities include fire protection, Senior citizens centers, Community centers, Boys & girls clubs, Recreational facilities, etc.
- **Transportation Alternatives Program** – These funds can be used for trail construction. This program is administered by ALDOT. Projects typically range between \$250,000 -- \$500,000 in construction value and require a 20% match.
- **USDA Community Facilities Program** – This program is comprised of loans, grants and loan guarantees. Grant funds are limited and loan terms and conditions include providing up to 100% of the market value of the facility and up to 40 years of life of security. The objective of the funds is to provide essential community facilities for rural communities. Eligible applicants are public bodies, non-profit organizations, and recognized tribes. USDA approved lenders may apply for loan guarantees on behalf of the above entities. Uses for the funds include building facilities and purchasing equipment for fire and rescue, police stations, early warning systems, health clinics, schools, libraries, hospitals, recreational facilities, etc. Eligible areas are rural areas, cities and towns with populations of 20,000 or less.
- **ADECA Appalachian Regional Commission (ARC)** – The goal of the ARC program is to create opportunities for self-sustaining economic development and improved quality of life. All projects must meet one of the goals established by ARC:
  - ARC Goal 1: Increase job opportunities and per capita income in Appalachia to reach parity with the nation.
  - ARC Goal 2: Strengthen the capacity of the people of Appalachia to compete in the global economy.
  - ARC Goal 3: Develop and improve Appalachia’s infrastructure to make the Region economically competitive.
  - ARC Goal 4: Build the Appalachian Development Highway System to reduce Appalachia’s isolation.

A recreational project under ARC should be geared towards the end of increasing local, national and international tourism opportunities so to fit into the objectives of goals 1 and 2. Eligible applicants for ARC funds include a unit of local government (city or county) or a nonprofit (501C3) agency. Pre-applications are due in the late summer/early fall of each calendar year. Selected pre-applications are invited to submit a full application by the end of the same calendar year. In Elmore County, ARC grants currently require a 50% match, and grant ceilings should be discussed with the ARC office at ADECA and your Regional Planning Commission.

[ This page is intentionally left blank. ]

# APPENDIX

## LIST OF RECREATION FACILITIES

### Nature-Based Recreation

- Alabama Power Company Boat Ramp
- Alabama Power Company Boat Ramp
- Anchor Bay Marina
- Boat Ramp
- Bonner's Point
- Coosa Outdoor Center
- Coosa River Adventures
- Cooter's Pond
- Corn Creek Park
- Emerald Mountain Golf Course
- Gold Star Park
- Holtville Park
- Jasmine Hill Gardens and Outdoor Museum
- Kowaliga Landing
- Kowaliga Marina
- Lake Jordan Marina
- Legacy Park
- Meadowbrook Park
- Monster Mountain MX Park
- Panther Place Park
- Pines Golf Course
- Quail Walk Golf Course
- Real Island Marina
- Robinson Springs Park
- Russell Lands Boat Ramp
- Shade Tree Riding Stables
- Tallassee Boat Ramp
- Tallassee Kayak Ramp @ AES
- The Ridge Marina
- Valley Brook Park
- Wetumpka Airport
- Whispering Springs Campground

### Ballfield Recreation

- Stanhope Elmore High School
- Mill Creek Park
- Village Green Park
- Robert Trent Jones Golf - Capitol Hill
- New Life Christian Center
- Edgewood Academy
- Wetumpka High School
- Elmore County Technical Center
- Wetumpka Sports Complex
- Castleberry Park
- Aaron Park
- Tallassee High School Football Stadium
- Southside Middle School
- Ingram State Technical College
- Holtville Ball Fields
- Crenshaw Community Ball Park
- New Home Missionary Baptist Church
- Prattville Christian Academy
- Millbrook Middle/Junior High School
- Wetumpka Middle School
- City of Wetumpka Soccer Fields
- YMCA Wetumpka
- Tallassee High School
- Wetumpka High School Football Stadium

## **PUBLIC COMMENTS**

**COOSADA** / Monday - March 17, 2014

### **What is your BEST idea for outdoor recreation in Elmore County?**

- Basketball courts, indoor and outdoor
- Recreation needed are areas. Walking trail, bike trail, for youth and seniors. Basketball, picnic area for families/covered. Fishing, crosswalks, sidewalks, bench seats for seniors on walking trail.
- I believe a running/walking track with a recreation park for the children, also a lighted basketball court with four or more basketball goals are all needed in addition to what we have already.
- Connected greenways throughout the county.
- Pavilions, playgrounds, walking trails, fishing streams, soccer field, volleyball field. Property needs developing; 12 acres of ground.
- Bike Paths – along roadways, through and around parks, trails.
- Sports complex (multipurpose) with tennis courts & hiking/biking trails. “One Stop Shop” for outdoor recreation.
- I believe that we should develop a partnership with Elmore County and the Wetumpka YMCA (tennis courts).
- More hiking trails in the Millbrook area. Access to camping throughout the county for scouts.
- Large multi-use facility for community. Soccer fields/football fields, baseball/softball.
- Tennis courts/complex needed in our county.
- My best idea would be to have an outdoor facility encompassing multiple outdoor sporting opportunities, i.e. soccer, swimming, basketball, etc.
- We need more RV parks with full hookups.
- Revise the trail of Trail of Legends Association Trail Plan. Rock hounding – get a roadside geology of Elmore County booklet for visitors.

**TALLASSEE** / Tuesday - March 18, 2014

### **What is your BEST idea for outdoor recreation in Elmore County?**

- Developing the small bridge by the Old Mill over the river needs to be developed into a Pedestrian Bridge. Great scenery and it gives our citizens a reason to walk, exercise, mingle.
- I’m very concerned that the trails on the west side connect to the OLD bridge to trails to be constructed the east side. Secretary, Tallassee Redevelopment Authority
- Find out what other people are doing and support those things. Include facilities on existing web pages that show various fishing areas, boating areas around the area.
- Bird watching trails.

## **WETUMPKA** / Thursday - March 20, 2014

### **What is your BEST idea for outdoor recreation in Elmore County?**

- Realization of the William Bartram Nature Trail and dock/kayak launch at Fort Toulouse-Fort Jackson Park. The dock would provide for fishing, kayak/canoe put in-take in. It would be adjacent to the campground. The William Bartram nature Trail would provide walking, hiking, and educational opportunities. Visitors would be able to experience both land and water resources just as William Bartram did in 1775.
- The Coosa River and surrounding area for water trails, hiking trails, biking trails, fishing trails, multi-use trails (Swayback Bridge & Corn Creek Park). The Seven Mile stretch of the Coosa from Jordan Dam to Gold Star Park and the 51-mile Tallapoosa from “AES” Boat ramp to Fort Toulouse are under “appreciated” outdoor recreational draws for Elmore County.
- There needs to be an arena for horse events such as barrel races, rodeos, and shows. A good place for the arena would be beside the sports complex on Highway 14.
- Build a paved loop around the Wetumpka ball complex for hiking/walking.
- Disc golf course, bocce ball courts at the sports park on Highway 14.
- Walking/hiking/biking trail from Ft. Toulouse to Jordan Dam.
- Access Road to Corn Creek Park. Seth Kyser 334-328-2107
- Provide access to Corn Creek Park. Need to access recreational flows n the Coosa River. Marie Kyser 324-9690.
- New access t Corn Creek Park
- Hotels along Lake Martin, Improve Water Recreation
- Sky Zone, Zoo, Bowling Alley, Horseback Riding
- Public Swimming Pool
- Elmore County needs more hotels to accommodate visitors for softball and baseball tournaments. One hotel will not work.
- An outdoor walking-biking and running track/path-incorporate an exercise trail to go with it.

## **COOSADA, TALLASSEE AND WETUMPKA** / August 12, 14, 18, 2014

A series of public meetings were held the weeks of August 12 and August 18 in Millbrook/ Coosada, Tallassee, and Wetumpka. These meetings were not well attended and no written comments were received. The final report in draft form was posted to the the Elmore County website for three weeks of review prior to adoption by the Elmore County Commision.

## RECREATION OPPORTUNITIES STUDIES

In Alabama, Shelby and Baldwin counties are examples of county resources being used in partnership with the efforts of private organizations and local communities.



Figure 45 - Bike trails in Oak Mountain State Park. Source: [birminghambusinessalliance.com](http://birminghambusinessalliance.com)



Figure 46 - Bridge installed for crossing Double Oak Lake dam spillway. Source: [americantrails.org](http://americantrails.org)

### Shelby County and Oak Mountain State Park Bike Trails

Recent efforts on the Oak Mountain State Park Mountain Bike Trails in Shelby County demonstrate a county commission's role as a supporting group to local private organizations. The Birmingham Urban Mountain Pedalers (BUMP) have worked extensively over the past years to build new biking trails in Oak Mountain, link existing trails together, and better unite efforts to make that region a desirable mountain biking destination. Together, BUMP and Shelby County have received more than \$400,000 in trail-building grants over the past five years and have built nearly 30 miles of trails.

While BUMP has served primarily as the primary catalyst for the trail planning, development, and maintenance, they have been supported by a network of public and private partners that each provide a specific asset necessary for the projects to be carried out. Developing a trail that uses State Park lands can be very difficult without a unified partnership between the various users and developers.

BUMP's main focus over the past five years has been the Double Oak Trail at Oak Mountain State Park, also known as the "Red Trail." This 26 mile trail was built and is maintained by BUMP and continues to be a successful collaborative effort between the non-profit, Shelby County Commission, the City of Pelham, the Alabama Department of Conservation and Natural Resources, and the Alabama Department of Economic and Community Affairs.

In order to obtain the permissions and funding necessary for such a project, BUMP worked with the City of Pelham and the Shelby County Commission in 2009 to apply for a \$100,000 Federal Recreational Trails Program grant. They were successful in obtaining the federal funds as well as multiple other individual contributions such as \$20,000 of in-kind services from the City of Pelham, state park access and permission to use machinery by Oak Mountain State Park, and in-kind services and materials from the Shelby County Commission.

This project, along with the total outdoor recreation development spurred by this public/private partnership, is significant because it shows the recognition by Alabama citizens and their representatives for outdoor recreation's impact on the economy. It has long been established that outdoor recreation opportunities have a positive impact on a community's quality of life which translates into a more desirable and active community. Studies over the past decade, though, show that outdoor recreation has a more direct and substantial economic impact on a community.

With relatively small local financial investment in Oak Mountain State Park, the community volunteers and biking enthusiasts have created a nationally praised mountain biking trail that attracts cyclists from all over the country.

### **Baldwin County and the Eastern Shore Trail**

The Eastern Shore Trail in Baldwin County began conceptually nearly 20 years ago by the Baldwin County Trailblazers, a non-profit founded in 1995 by Teko Wiseman. The group’s goal was to create a pedestrian and bike friendly community, highlighted by a trail extending 32 miles from Battleship Memorial Park in Mobile, through the bay communities in Baldwin County, all the way to Weeks Bay Reserve. This trail, The Eastern Shore Trail, would require communication, cooperation, and investment by multiple Baldwin County communities along the bay. Recognizing the difficulties involved with organizing various municipalities and organizations, the Trailblazers sought the help of the Baldwin County Commission to promote the concept to the communities.



Figure 47 - Trailhead kiosk for the Eastern Shore Trail. Source: [thetrailblazers.org](http://thetrailblazers.org)



Figure 48 - Pedestrian signage along the trail. Source: [traillink.com](http://traillink.com)



Figure 49 - Residents and tourists frequent the trails. Source: [al.com](http://al.com)



Figure 50 - Biking the Eastern Shore Trail. Source: [al.com](http://al.com)



The project would consist largely of infrastructure already in place, sidewalks, roads, and pathways, but it suggested that these be modified to support various modes of pedestrian use. With the support and technical assistance for the Baldwin County Commission, the Trailblazers successfully applied for grants that have been primarily under the umbrella of the Transportation Enhancement Act and the American Recovery and Reinvestment Act. These grants fund 80 percent of the cost of a given project, which leaves the remaining 20 percent of costs to be divided between the County, the Trailblazers, and local municipalities.

Working with volunteers and local officials, the Trailblazers have been able to secure over \$6 million from local, state, federal and private sources for the Eastern Shore Trail. A few examples of funding for specific projects on the Eastern Shore Trail include:

**2013: Grant to Complete 1.5 mile missing link on south end of trail**

- \$308,324: Federal Transportation Alternatives Program grant via ALDOT.
- \$50,000: County Commission contribution (engineering and grant writing)
- \$77,000: Trailblazers contribution

**Gator Alley:**

- \$320,000: ALDOT’s Transportation Alternatives Program
- \$92,000: City of Daphne 20% match
- \$80,000: ADECA grant
- \$20,000: City of Daphne match

**2014: U.S.S. AL Battleship Memorial Park Trailhead:**

- \$27,192: Federal Highway Administration’s Recreational Trails Program grant
- \$5,438: Trailblazers’ 20% match



Figure 51 - Eastern Shore Trail Map. Source: Baldwin County Trailblazers.



Figure 52 - Eastern Shore Trail Map. Source: americantrails.org

## RESOURCES

**Trail of Legends Association (TOLA)**  
[www.trailoflegends.org](http://www.trailoflegends.org)

**Coosa River Paddling Club**  
[www.coosariverpaddlingclub.com](http://www.coosariverpaddlingclub.com)

**Alabama Wildlife Foundation  
Lanark**  
[www.alabamawildlife.org/lanark](http://www.alabamawildlife.org/lanark)

**Russell Lands**  
[www.russelllandsonlakemartin.com](http://www.russelllandsonlakemartin.com)

**Forever Wild**  
[www.alabamaforeverwild.com](http://www.alabamaforeverwild.com)

**Alabama Scenic River Trail**  
[www.alabamascenicrivertrail.com](http://www.alabamascenicrivertrail.com)

**Alabama Trails**  
[www.alabamatrail.org](http://www.alabamatrail.org)  
[www.bamatrails.com](http://www.bamatrails.com)

[Economic Impact Analysis of Lake Martin 2009](#) prepared by Robert Charles Lesser and Co.

[Central Alabama Regional Connector Trail Plan](#), prepared by Central Alabama Regional Planning and Development Commission, 2003

[Statewide Outdoor Recreation Plan 2013-2018](#) (SCORP) prepared by Alabama Department of Economic and Community Affairs,(ADECA).

[www.adeca.alabama.gov](http://www.adeca.alabama.gov)

# ELMORE COUNTY OUTDOOR RECREATION PLAN

ELMORE COUNTY, ALABAMA  
SEPTEMBER 2014



GOODWYN | MILLS | CAWOOD

THE UNIVERSITY OF  
**ALABAMA**